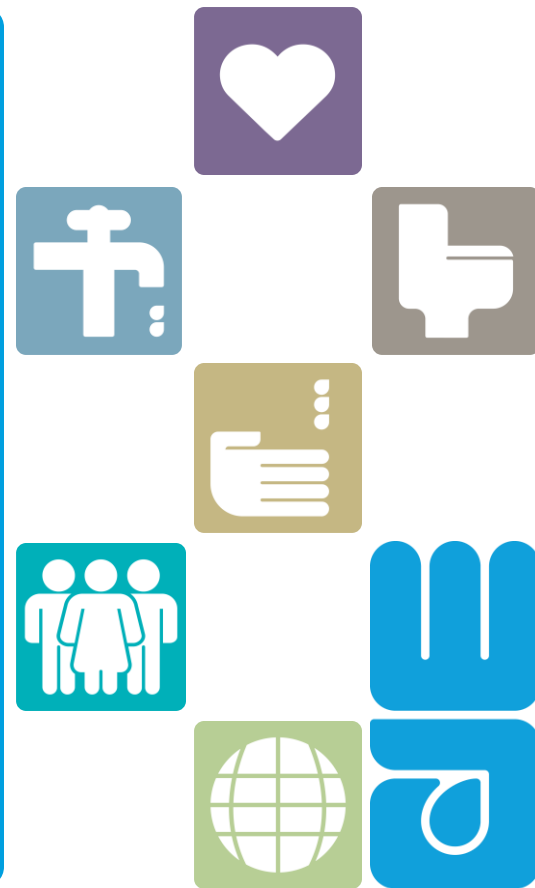


# Make your own handwashing Easter Wreath

An activity for all the family



**WaterAid**

# Make your own handwashing themed Easter wreath

At WaterAid, we know that working together makes a real difference and gets results.

Get the whole family involved in making a handwashing themed decorative Easter Wreath to remind everyone of the importance of washing our hands while having fun at Easter.

Follow the simple step by step instructions and everyone can (literally) lend a hand for a truly collaborative effort.



# What do I need?

You don't need any special equipment or particular type of paper.  
Use things that you already have around the house.

For example, re-use scrap paper, wrapping paper and unwanted packaging to create your masterpiece.

Scissors

Paper – any type

Pens and pencils

Card – any type

Glue or sticky tape

Large plate

Smaller plate

Wool, string or ribbon



## Step 1 - Make your base

Young children may need help with this part.

- Place the large plate on your card and draw round it. Remove the plate to reveal a circle.
- Place the smaller plate inside the middle of the circle and draw round it. Remove the plate to reveal a hoop shape.
- Using your scissors cut round the large circle. Carefully cut out the middle circle to make a hoop.

**The hoop will form the base of your wreath.**



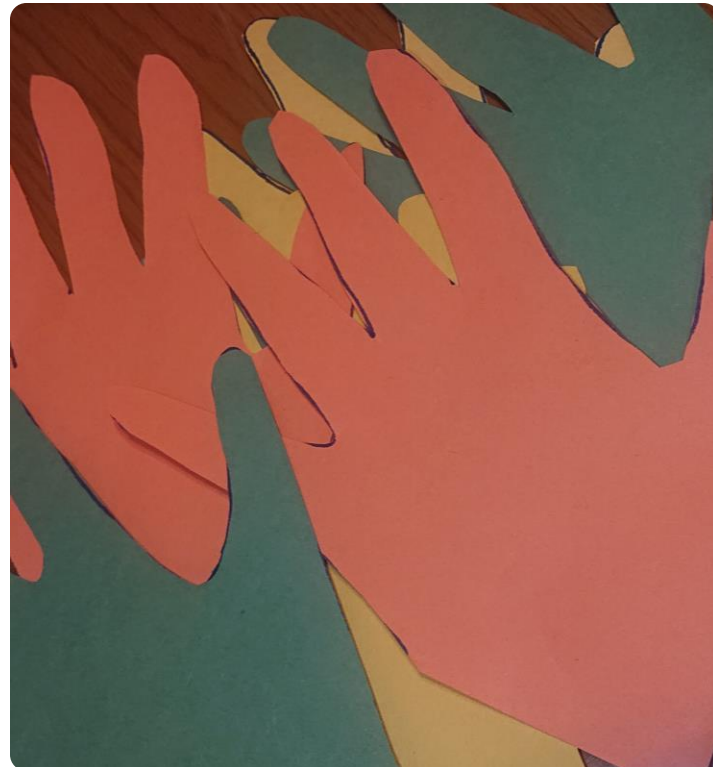
## Step 2 - Make the hands

Everyone can get involved in this part.

- Draw round everyone's hands. Each member of the family can draw round their own, or you can draw around each others.

Draw at least 6 hands.

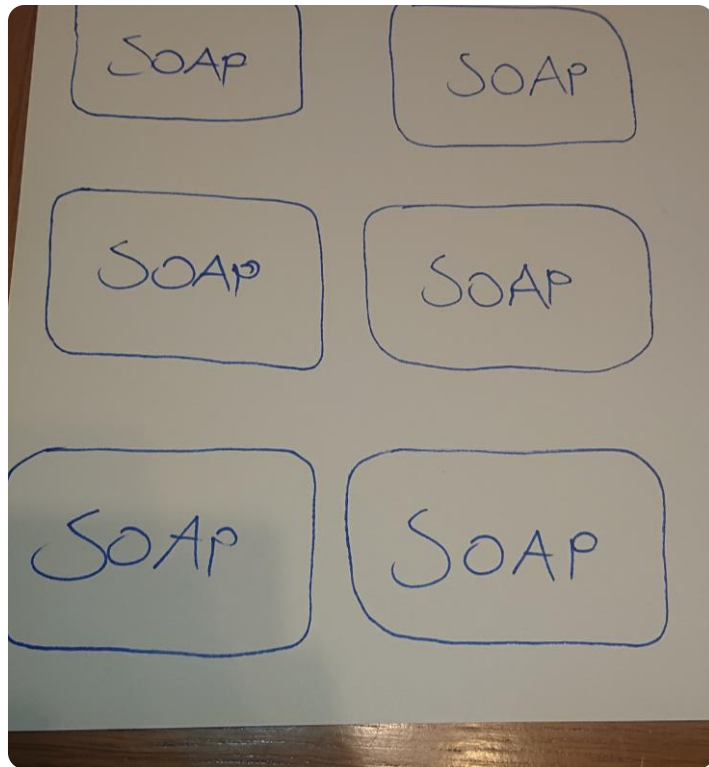
- (Optional) Colour and decorate the hands or add handwashing messages onto the hands to encourage everyone to wash their hands properly.
- Carefully cut the hands out and set them aside.



## Step 3 - Make the soap

When we wash our hands, it's really important to use soap. Bars of soap, or liquid soap – it really is up to you.

- Draw simple bars of soap by drawing rectangles with rounded corners. If this is tricky, draw round a mobile phone to get the shape right.
- Draw at least 6. They can be any colour.
- Write the word 'soap' in the middle of your bars of soap.
- Cut the bars of soap out and set aside.



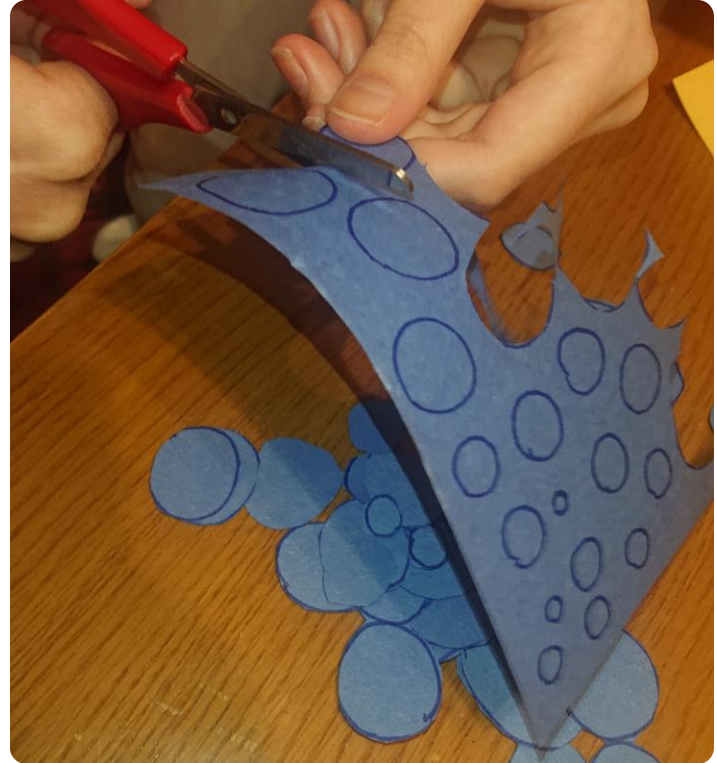
## Step 4 - Make the bubbles

When you wash your hands properly, you need to make sure you rub your hands together to create lather and often bubbles.

- Draw lots of circles of different sizes on your paper. These are your bubbles!

You can colour in your bubbles if you wish or even stick foil or sweet wrappers over them to make them shiny. You should aim to have around 3 bubbles per bar of soap, but the number is up to you. It depends how bubbly you want your wreath to be.

- Cut the bubbles out and set aside.

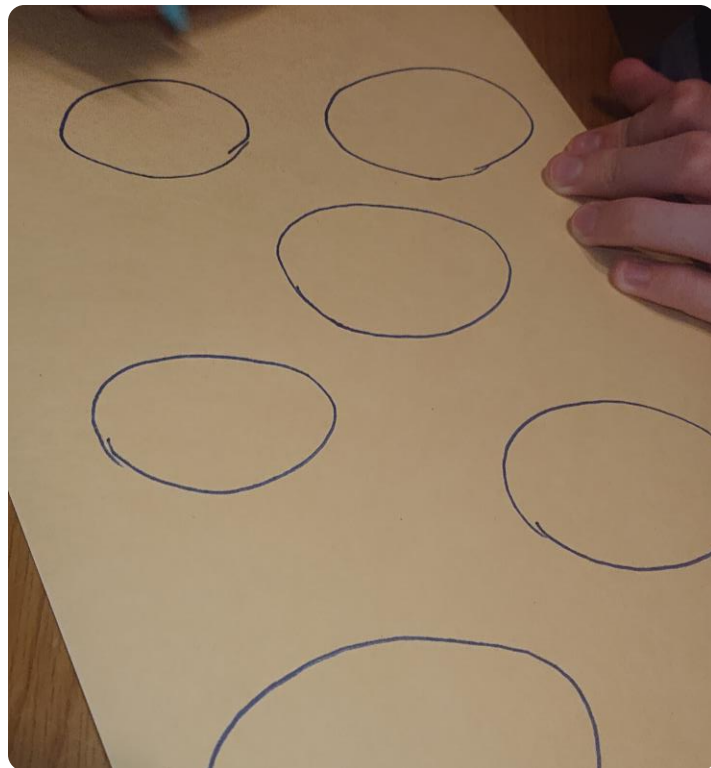


## Step 5 - Make the Easter symbols

The Easter symbols you choose are entirely up to you. You could think about what Easter means to you and your family and draw the symbols that you think are most important.

If you are stuck for ideas, you could consider eggs, crosses, flowers, bunnies or hot cross buns.

- Draw and decorate your Easter symbols. Aim for at least four.
- Cut these out and set them aside.





## Step 6 - Decorate the hoop

Place your hoop onto a flat surface before you begin sticking and layering your decorations to create your Wreath.

- Start with your hand cut outs and place them round the hoop to create the base of your wreath. Don't worry if part of the hands cover the hole, you can cut the excess away once you've stuck the hands round the hoop.
- Stick the bars of soap onto the hands.
- Stick the bubbles around the bars of soap and on the hands.
- Finally add your Easter symbols.

**Feeling extra fancy?** Add glitter to your creation to really make it stand out.



## Step 7 - Make the hanger

Decide where you want to hang your wreath so everyone can see it.

- Cut a piece of string, ribbon or wool approximately the same length of your wreath.
- Stick the string on to the back of your wreath using sticky tape to create a loop to allow you to hang your wreath.

Check that the wreath is the right way up before sticking the string on.



## Well done!

You've created a beautiful Easter Wreath with a really important message.

Happy crafting and don't forget to share your amazing wreaths with WaterAid.

**Facebook**      [facebook.com/wateraid](https://facebook.com/wateraid)  
**Instagram**    [instagram.com/wateraid](https://instagram.com/wateraid)  
**Twitter**        [@WaterAid](https://twitter.com/WaterAid)

Hashtags **#WaterAid** and **#hygienewreath**

Alternatively email them to us at: [education@wateraid.org](mailto:education@wateraid.org)

We'd love to see them. **Thank you!**

